

# ZOOMLION

## ARTICULATING BOOM LIFT

### ZA26J

Comply with CE Standard



### HIGHLIGHTS

- ▶ Large work range, max work height of 28.2m, max outreach of 19.4m, and up and over height of 9.48m
- ▶ Build-in multiple pressure control leveling system to enhance stability
- ▶ Precise load sensing system to improve overload safety operations
- ▶ Pump control + valve control for accurate flow distribution
- ▶ Outstanding below ground reach of 6.5m (16ft 9in)
- ▶ Jib, main boom and tower boom limit position buffer for comfort operation
- ▶ Platform fast lifting function provides high-efficient performance without tower boom operation
- ▶ Small stowed size, able to access container for transportation for lower transporting cost

### FEATURES

#### Standard Features

Horn
All motion alarm
Proportional control
Self-closing entry gate
Flashing beacon
Auto-leveling system
Emergency stop button
Over tilt protection system
Emergency descent system
On-board diagnostic system
Oscillating axle
4.3' LED display
Load sensing system
Swing-out engine tray

#### Accessories & Options

- ▶ Platform work lights
- ▶ Anti-collision device
- ▶ AC power to platform

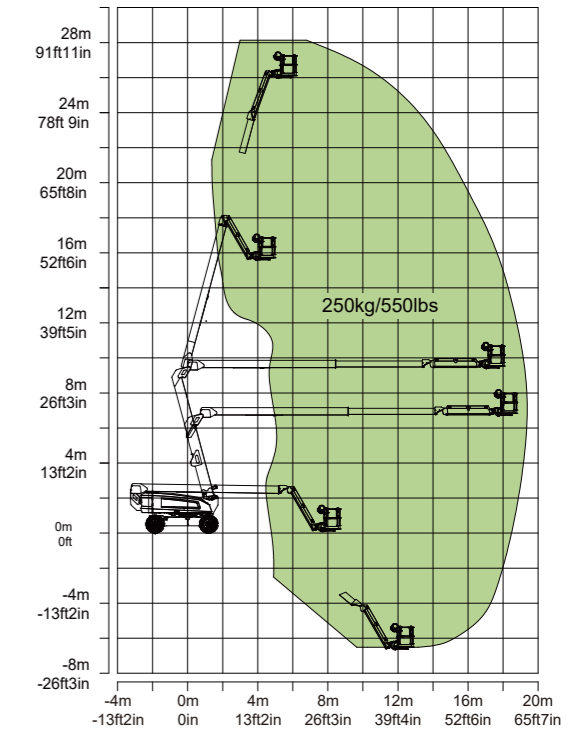
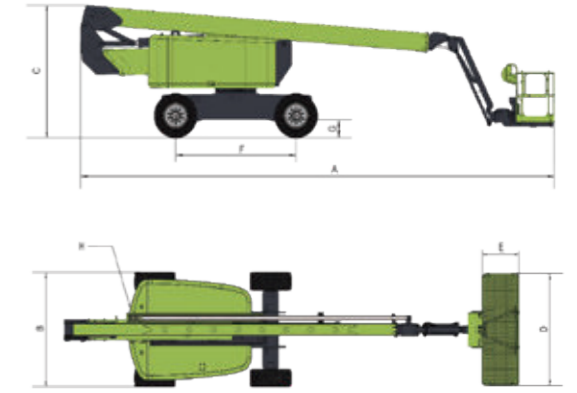
## ACCESS WITH ZOOMLION GREEN

Phone: 0086(731)-88353692  
E-mail: awp@zoomlion.com

Add: 701 Xulong Nan Lu, Xiangjiang New District, Changsha Hunan, China  
Web: www.zoomlion-access.com

## ZOOMLION

Model	ZA26J	
	Imperial	Metric
<b>Size</b>		
Work Height	92ft 6in	28.2m
Platform Height	85ft 11in	26.2m
Horizontal Outreach	63ft 8in	19.4m
Up and Over Height	31ft 1in	9.48m
A - Stowed Length	38ft 7in	11.75m
B - Stowed Width	8ft 2in	2.49m
C - Stowed Height	9ft 3in	2.82m
D - Platform Length	8ft	2.44m
E - Platform Width	2ft 12in	0.91m
F - Wheelbase	10ft	3.05m
G - Ground Clearance	1ft 5in	0.42m
<b>Performance</b>		
Platform Capacity	550 lb	250kg
Drive Speed	3.11 mph	5.0km/h
Gradeability	45%(24°)	
Axles Oscillation	8in	0.2m
Turning Radius (Inside)	10ft 4in	3.14m
Turning Radius (Outside)	21ft 3in	6.48m
Turntable Swing	360° continuous	
Platform Rotation	±90°	
H-Tail Swing	4ft 8in	1.422m
Max. Working Slope	5°	
Max. Wind Speed	28mph	12.5m/s
<b>Power</b>		
Diesel Engine	Kubota V2607/KubotaV3307	
Fuel Tank Capacity	39.6 (us gal)	150L
Auxiliary Power	12V	
Control Voltage	12V	
Hydraulic System Capacity	69.5 (us gal)	263L
Hydraulic Tank Capacity	47.6 (us gal)	180L
<b>Tire</b>		
Type	Foam-filled Tires	
<b>Weight</b>		
Gross	41447 lb	18800kg



Range of Motion ZA26J

ZOOMLION ACCESS reserves the right to make specification and/or equipment changes without prior notification. Product specifications are updated to June, 2024.