

TRT 90

ROUGH TERRAIN CRANE

90 T CAPACITY



► 90 t lifting capacity

► 49,5 m max tip height main boom

► 47,0 m max boom length

► 66,0 m / 58,5 m max tip height with additional 17 m / 9 m lattice jib

EASY TO HANDLE

Easy transportability and maneuverability:

- Compact: only 3.00 m width
- 4 steering modes
- Automatic / manual shift modes

HIGH PERFORMANCES

- Superior load charts and tip heights
- 5-sections hydraulic boom with 3 extension modes: proportional, strength, stability
- Low energy consumption Cummins engine 168 kW (V) / 164 kW (IIIA)
- 26.5 (29.5) tires

FULL CONTROL: New TEOS Operating System

- 10" full-color touch screen display with intuitive interface
- Ergonomic electro-proportional joysticks with adjustable responsiveness to operator preferences

GREAT COMFORT, EXCELLENT VISIBILITY

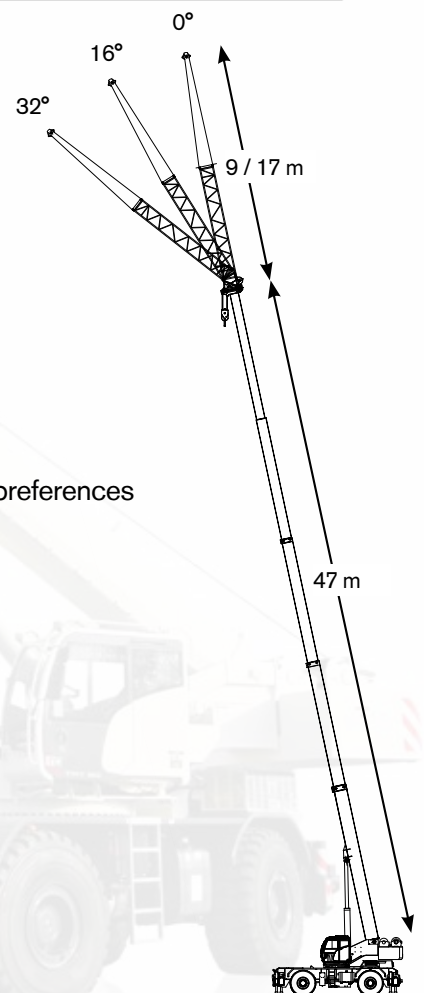
- Extra wide and tiltable cabin with large glass surface. No blind spots.
- 3 working area LED lights outside the cab included

TOP RELIABILITY

- High quality assured, with minimal service needs
- Low operating cost
- T-Link Telematics Platform included

WIDE OPTIONS CHOICE

- Additional lattice jibs of 15 m / 8 m and single sheave
- Auxiliary winch
- Up to 4 cameras for enhanced visibility, integrated on main display
- Radio remote control





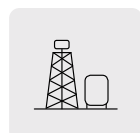
Cost savings and increased of productivity
Better management of maintenance and technical assistance
Fleet control with Geofence
Improved machine management, statistics and real-time data



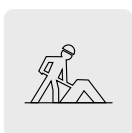
Improved information flow and accessibility
Increases operating efficiency
10" full-color touch screen display
Intuitive navigation
Diagnostics
Options included (cameras, radio control, T-Link)

KEY APPLICATIONS

The versatility of our rough terrain cranes allow us to cater for a number of applications, including:



OIL & GAS



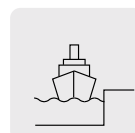
CONSTRUCTION



MINING



SHIPPING
& LOGISTICS



SHIPYARDS



POWER
PLANTS



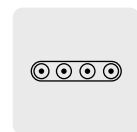
ROADS & RAILWAYS
CONSTRUCTION



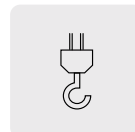
MILITARY



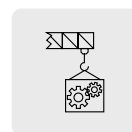
MATERIAL
HANDLING



MOBILE
EQUIPMENT
COMMISSIONING



GENERAL
LIFTING
APPLICATIONS



MAINTENANCE
WORKS



TEREX ROUGH TERRAIN CRANES

Terex Italia Srl

Via Cassoletta, 76 - Fraz. Crespellano
40053 Valsamoggia (BO)
Italy

Ph: +39 051 6501011

Email: mktg.cranes@terex.com

www.terex.com/rough-terrain-cranes



Brochure Reference: RT-FL-M-E-TRT 90-01/23

WORKS FOR YOU.™