



# 5.24

# TH



### MAIN SECTORS



INDUSTRY

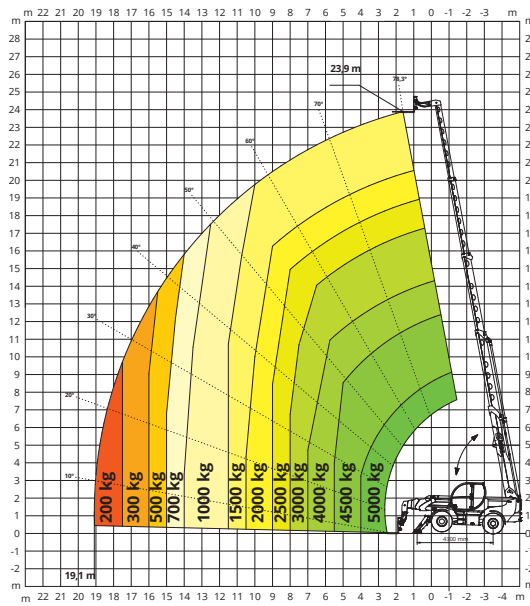


CONSTRUCTION

- Maximum lifting height: 23.90 m
- Maximum reach: 19.10 m
- Electronically controlled hydrostatic transmission
- Automatic levelling device
- Pivoting stabilizers

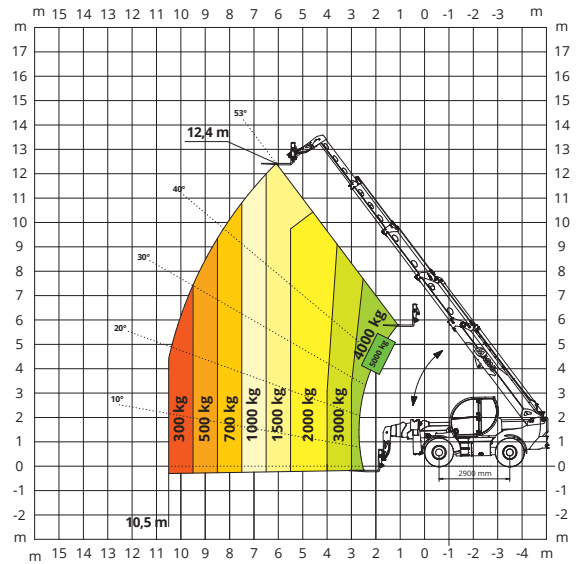
# ON STABILISERS

LOAD CHART ON FULLY EXTENDED STABILISERS



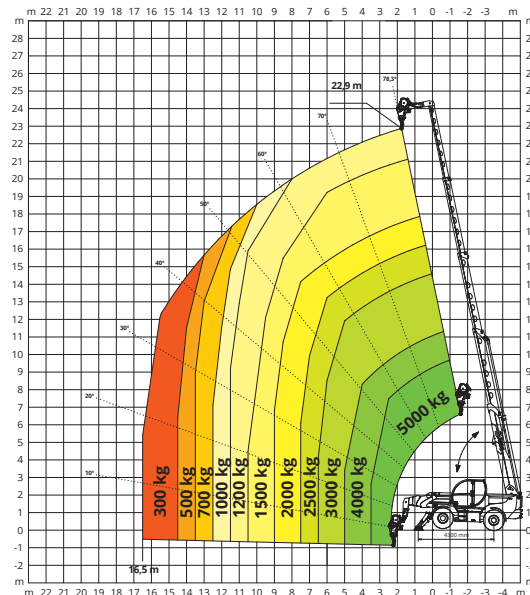
# ON TYRES

FRONT LOAD CHART ON TYRES



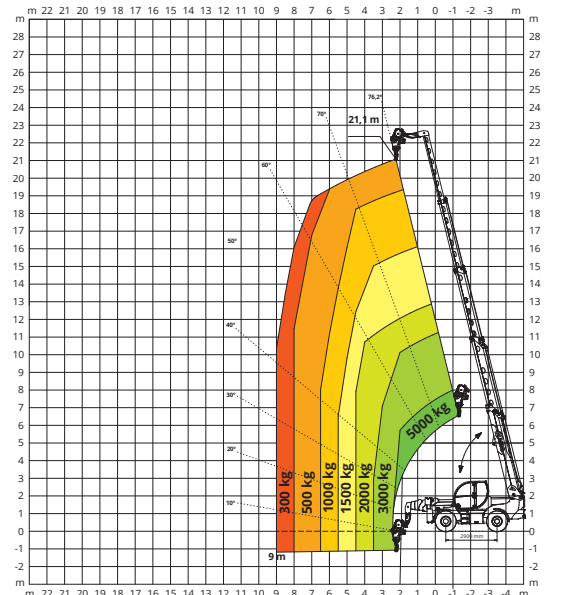
# W 5

WINCH **5,000 kg** ON STABILISERS



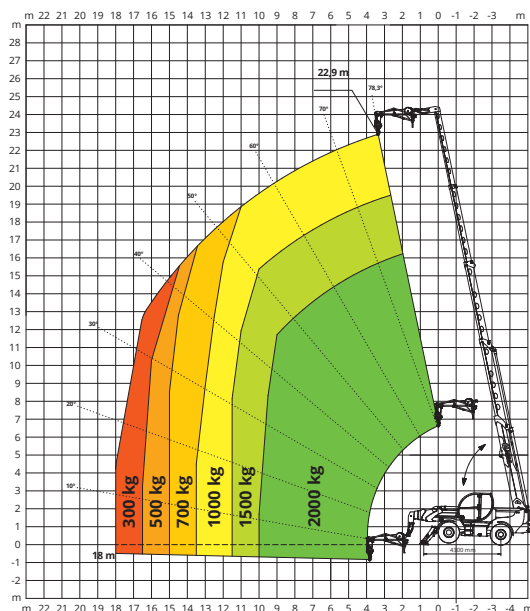
# W 5

WINCH **5,000 kg** ON TYRES



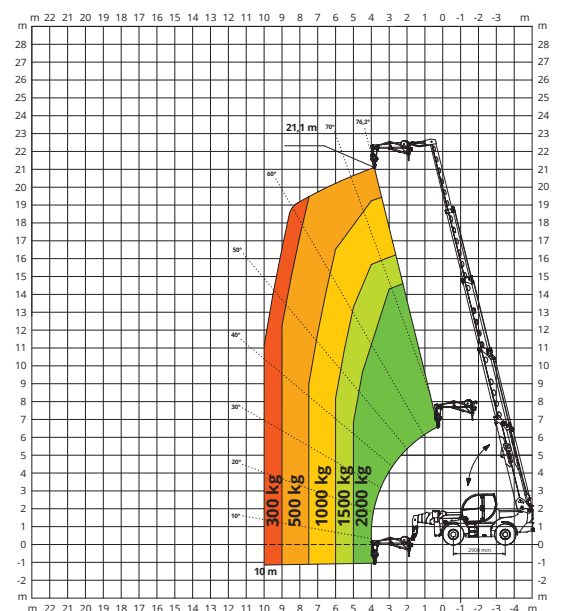
# JW 2000

JIB WINCH **2,000 kg** ON STABILISERS



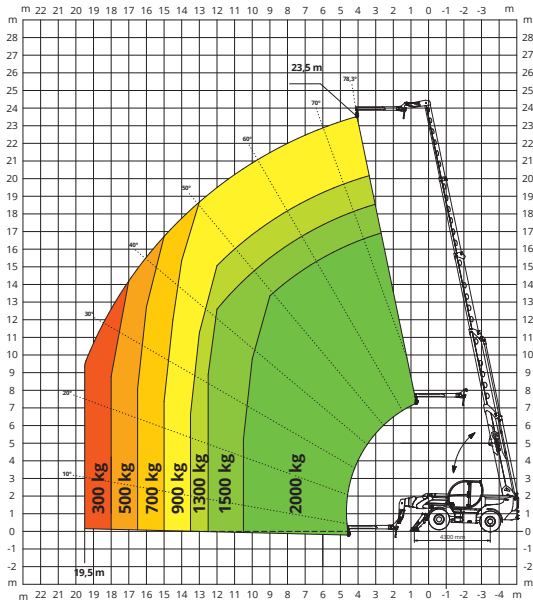
# JW 2000

JIB WINCH **2,000 kg** ON TYRES



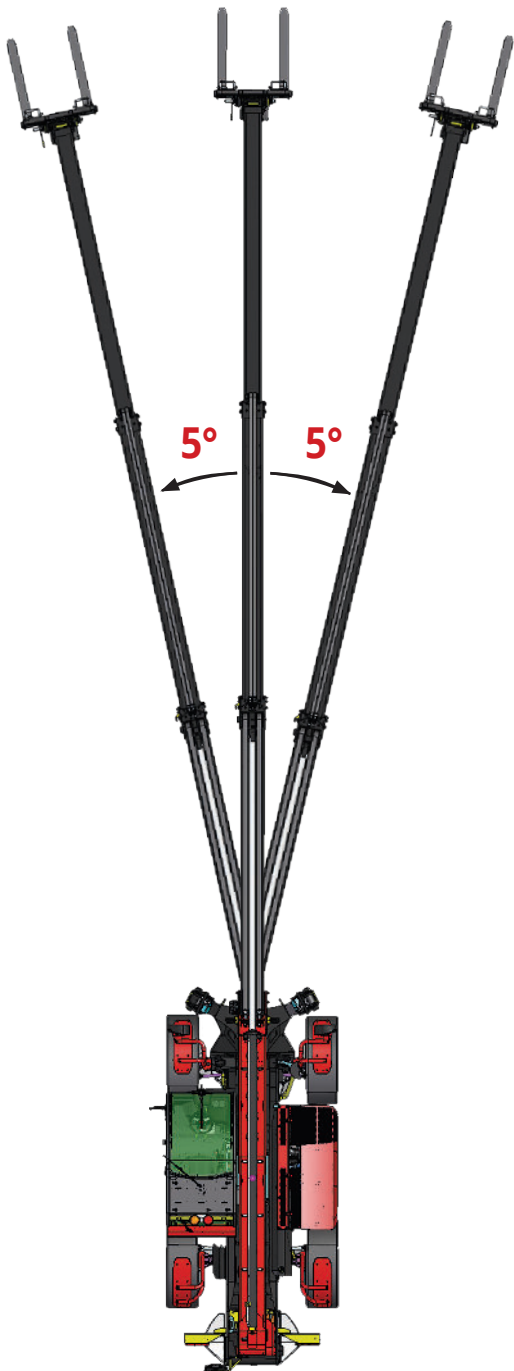
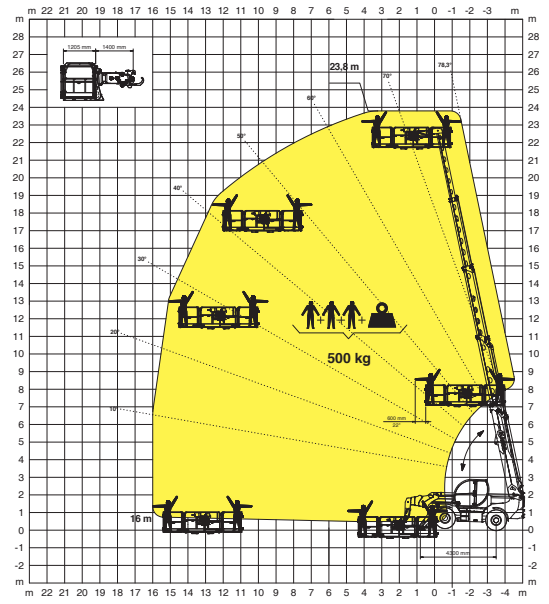
J 2000

JIB 2,000 kg



REP 2-4,5

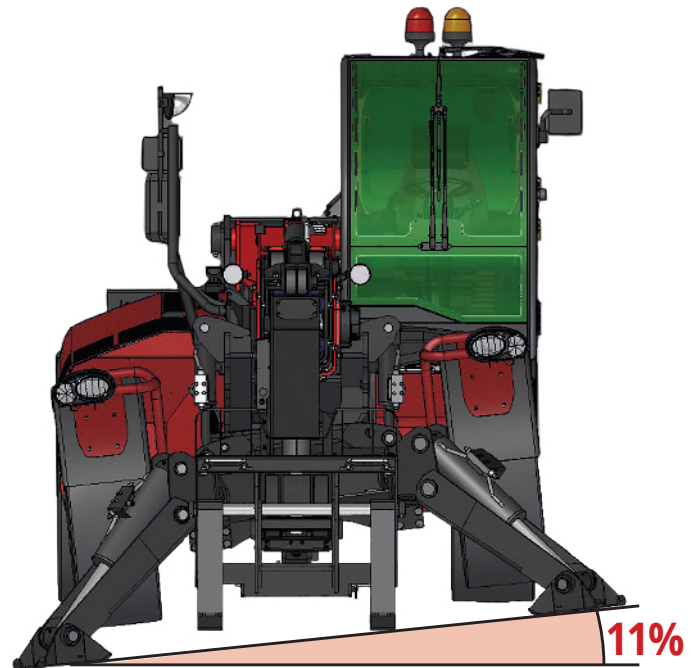
ROTATING EXTENDABLE BASKET 500 kg



### LATERAL SHIFTING SYSTEM

This telehandler is equipped with a lateral shifting system that permits to move sideways the rear part of the chassis and, with it, the telescopic boom relative to the longitudinal axis of the machine to correct the load position without the need to move the machine.

This system, in fact, allow a shifting of +/- 5° that corresponds to a shift of +/- 1,5 m with the boom completely extended, independently from which attachment is equipped.



Leveling works both on wheels and on stabilizers as the front axle is coupled with the stabilizers

MACHINE MODEL	Telescopic handler	TH 5.24		
	Maximum lifting capacity	4,999 kg (center of gravity 500 mm)		
	Maximum lifting height	23.90 m		
ENGINE	Type	<b>Deutz TCD 3,6 L4 Stage V</b>	<b>Deutz TCD 3,6 L4 Stage IV</b>	<b>Deutz TCD 3,6 L4 Stage IIIA</b>
	Rated power	100 kW (136 hp) @ 2,200 rpm		
	Maximum torque	500 Nm @ 1,600 rpm		
	Displacement	3,6 l		
	Cylinders	4 in line		
	Engine configuration	Diesel direct injection turbocharged		
	Cooling system	Water – intercooler		
TRANSMISSION	Type	Hydrostatic		
	Model	Danfoss / Rexroth		
	Maximum pressure	480 bar		
	Displacements	Electronically controlled variable displacement pump Variable displacement motor		
	Gear box	Dropbox, 2 speeds forward-reverse		
AXLES AND BRAKES	Type	Axles with planetary gearboxes		
	Rear axle	Oscillating and steering with hydraulic locking		
	Front axle	Oscillating and steering with levelling +/-5°		
	Service brake	Hydraulically operated wet multi-disk brakes on each axle		
	Parking brake	Hydraulic with negative action		
	Tyres dimensions	445/65 R22,5		
PERFORMANCE	Max. travel speed	40 km/h		
	Drawbar pull	72 kN		
	Gradeability	47%		
	Turning radius (end of forks)	5,830 mm		
WEIGHTS	Total unladen	15,500 kg		
	Front axle unladen (boom retracted and lowered)	6,850 kg		
	Rear axle unladen (boom retracted and lowered)	8,650 kg		
TANK AND SYSTEM CAPACITIES	Fuel tank	150 l	150 l	150 l
	AdBlue	10 l	10 l	-
	Hydraulic oil tank	140 l	140 l	140 l
	Engine oil tank	9 l	9 l	9 l
	Cooling liquid	20 l	20 l	20 l
HYDRAULIC CIRCUIT FOR MOVEMENTS	Max. operating system pressure	350 bar		
	Circuit type	Load sensing		
	Service pump	Danfoss / Rexroth – Variable displacement		
	Controls for boom and turret movements	Danfoss – SIL 2 electro-proportional valve		
	Controls for stabilizers	Bosch Rexroth – Electro-hydraulic actuators		
	Movements control	1 joystick Danfoss with FNR switch and dead man safety device - Management with CAN bus technology		
STANDARDS MET	EN 1459-1: concerning standards for variable-reach trucks EN 13000: concerning standards for mobile cranes EN 280: concerning standards for mobile elevating work platforms FOPS/ROPS EU 2016/1628: concerning engine emissions standards			

The data given in this brochure are provided for information purposes and are subject to change without prior notice

